

Molded Animals

Molded Animals can be bought either painted or unpainted. They can be made in foam, fiberglass, urethane, or epoxies. The birds and monkey are cast in pieces and blended together. The head and tail can be set in a variety of positions on the birds. The head, tail, arms, and legs can also be set in different positions. There are also several variations of the painting that can be done with the monkey and the parrot. The monkey has two variations of the head, one open mouth and one closed.



**Macaw sp.
A0101**



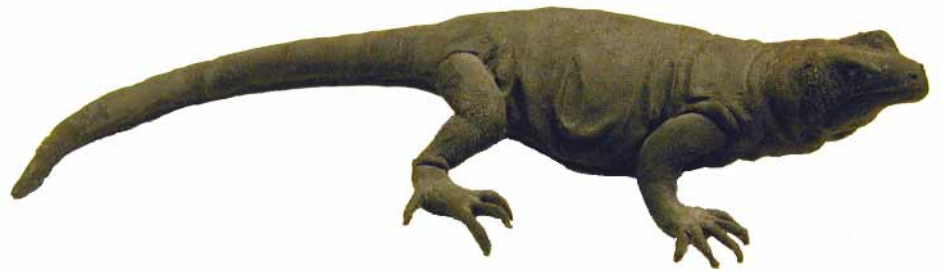
**Toucan sp.
A02010**



**Howler Monkey
A03010**



Norfolk Canyon Crab
93000



Iguana
A05010



Bog Turtle
(Over Size)
A04010